

COMPLETED PROJECTS

- Bramha Estate**, Kondhwa
- Bramha Memories**, Bhosale Nagar
- Bramha Garden**, Bund Garden Road
- Bramha Memories Hills**, Lulla Nagar
- Bramha Court**, Sahney Sujan Park
- Bramha Baug**, Uday Baug
- Bramha Suncity**, Wadgaon Sheri
- Bramha Emerald County**, Kondhwa
- Bramha Aangan**, Kondhwa
- Bramha Nagari**, Bopodi
- Bramha Park**, Vishrantwadi
- Bramha Nest**, SB Road
- Shan Bramha**, Budhwar Peth
- Bramha Horizon**, Kondhwa
- Bramha Avenue**, Kondhwa
- Bramha Majestic**, Kondhwa
- Bramha Darshan**, Shivajinagar
- Bramha Memories Fields**, Lulla Nagar
- Bramha Paradise**, Mangaldas Road
- Bramha Classic**, Bund Garden Road
- Bramha Sky One**, Undri
- Bramha Exuberance**, NIBM



MPG CLUB BY ROYAL ORCHID,
MAHABALESHWAR



ONGOING PROJECT
BRAHMA SKY UZURI, PIMPRI

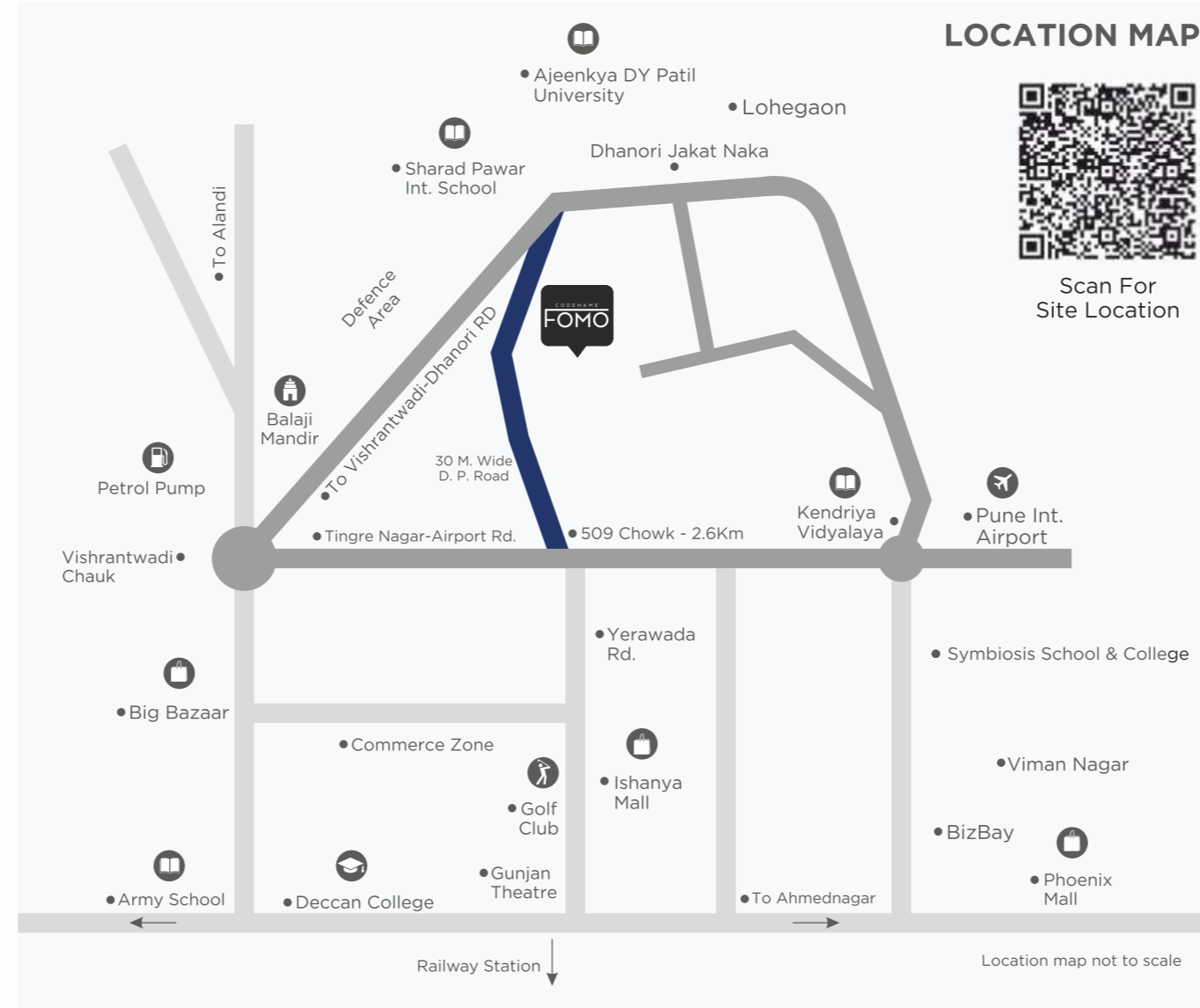


UPCOMING PROJECTS

HADAPSAR

KONDHWA

DAPOLI



KEY DISTANCE

Locations

Pune International Airport	2.1 Km
Upcoming Metro Station	5.2 Km
Golf Club	6.2 Km
Railway Station	9.0 Km

Shopping & Malls

Aeromall	2.4 Km
Ishanya Mall	5.0 Km
Phoenix Mall	5.5 Km
Big Bazaar	6.0 Km
D-Mart	6.6 Km

Education

Symbiosis School & College	3.0 Km
Ajeenkya DY Patil University	4.1 Km
Sharad Pawar Int. School	4.1 Km

Hospitals

CT Nursing	1.8 Km
Orchid Hospital	1.8 Km
Kedarnath Hospital	6.0 Km
Sahyadri Hospital	8.7 Km

IT Parks

Weikfield IT Park	5.0 Km
Commerzone	5.8 Km
Yerwada Tech Park	6.5 Km
Cerebrum IT Park	6.6 Km
Eon IT Park	11.5 Km



Site Address: Bramha Sky City, Khese Park, Dhanori, Pune, Maharashtra 411015 Contact: 91 7225 9090 / 91 7587 9090 Email: sales@bramharealty.in
Corporate Office: Bramha House, 250/251, M. G. Road, Camp, Pune 411 001 Telephone: +91 20 2633 0485/86 Email: info@bramharealty.in



MahaRERA No.: P52100029056 | <http://maharera.mahaonline.gov.in/>

This is not an offer, an invitation to offer and/or commitment of any nature. This contains artistic impressions and stock images for illustrative purpose and no warranty is expressly or impliedly given that completed development will comply in any degree with such artist's impression as depicted. All specifications of the flat shall be as per the final agreement between the Parties. Recipients are advised to use their discretion in relying on the information/amenities described/shown therein: T&C apply.

SHUBH ADVERTISING

Entree To TWILIGHT TOWERS



PRIME 2 & 3 BHK HOMES
@NEXT VIMAN NAGAR



TWILIGHT TOWERS

NOT TO MISS THE OPPORTUNITY OF LIVING WITH BEST CONNECTIVITY, COMMUNITY & LUXURY.

LEISURE

- Swimming Pool With Juice Bar
- Open Jacuzzi
- Steam & Sauna
- Massage Room
- Beauty Parlor

COMMUNITY ZONES

- Barbeque Area
- Business Lounge
- Conference Room
- Club House & Amphitheater
- Banquet Hall With Pantry

OUTDOOR SPORTS

- Tennis Court
- Cricket Pitch
- Skating Ring
- Badminton Court
- Basketball Court

INDOOR SPORTS

- Pool
- Carom
- Table Tennis
- Cards Table

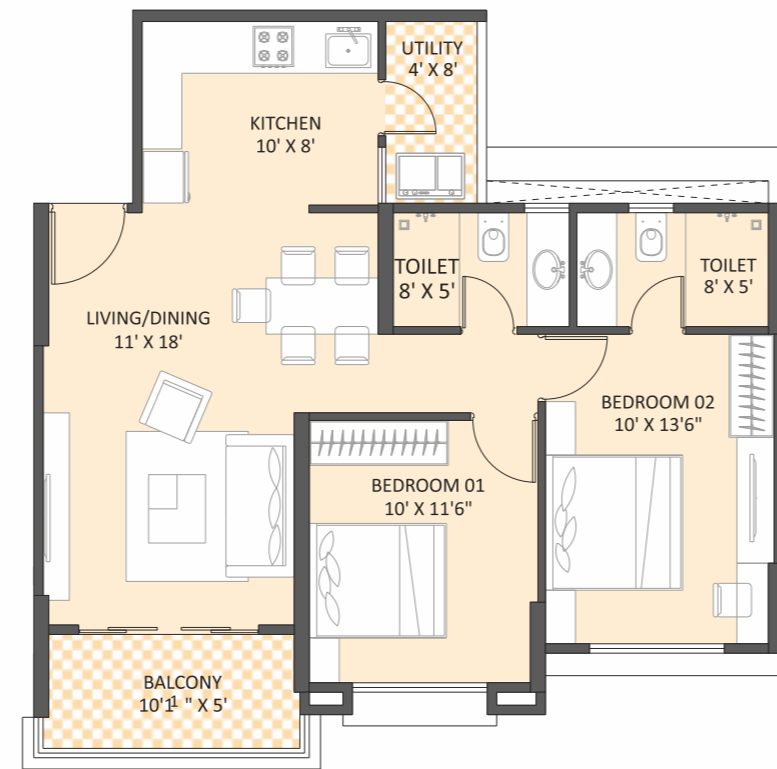
UTILITY

- Shopping Centre
- Vegetable Shop
- Doctor's Room

FITNESS

- Fully Equipped Gymnasium

And many more...



TOWER - S1 | 2 BHK
TYPICAL UNIT PLAN - 1

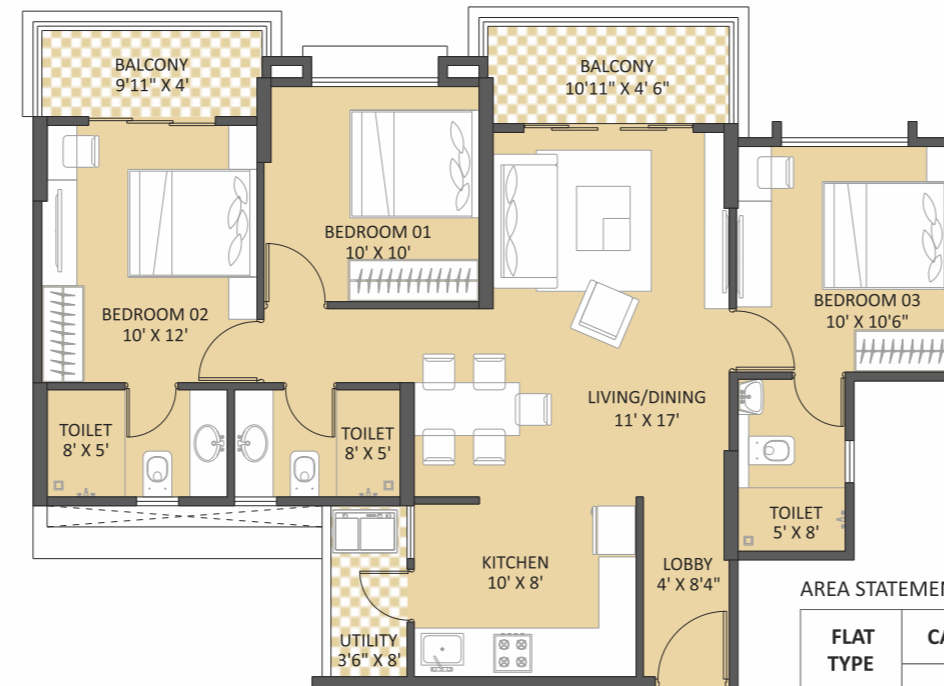
AREA STATEMENT

FLAT TYPE	CARPET AREA		TOTAL AREA	
	SQ.M.	SQ.M.	SQ.M.	SQ.FT.
2 BHK	64.90	8.12	73.02	786

TOWER - S1 | 2 BHK
TYPICAL UNIT PLAN - 3

AREA STATEMENT

FLAT TYPE	CARPET AREA		TOTAL AREA	
	SQ.M.	SQ.M.	SQ.M.	SQ.FT.
2 BHK	64.97	8.18	73.15	787



TOWER - S1 | 3 BHK
TYPICAL UNIT PLAN

AREA STATEMENT

FLAT TYPE	CARPET AREA		TOTAL AREA	
	SQ.M.	SQ.M.	SQ.M.	SQ.FT.
3 BHK	78.95	11.12	90.07	970

TOWER - S1 | Typical Floor Plan 2nd, 3rd, 4th, 5th, 6th, 7th, 9th, 10th, 11th & 12th Floor



AREA STATEMENT

FLAT NUMBER	FLAT TYPE	CARPET AREA		TOTAL AREA	
		SQ.M.	SQ.M.	SQ.M.	SQ.FT.
201, 301, 401, 501, 601, 701, 901, 1001, 1101, 1201	2 BHK	64.90	8.12	73.02	786
202, 302, 402, 502, 602, 702, 902, 1002, 1102, 1202	3 BHK	78.95	11.12	90.07	970
203, 303, 403, 503, 603, 703, 903, 1003, 1103, 1203	2 BHK	64.97	8.18	73.15	787
204, 304, 404, 504, 604, 704, 904, 1004, 1104, 1204	2 BHK	64.90	8.12	73.02	786